

# CLASSIC SQUARE

## Deli/Pastry Showcase

### STANDARD FEATURES

- Stainless steel insulated body with tubular painted galvanized chassis
- Dixell digital controller
- Air cooled condensing unit
- Temperature front and side glass single pane with anti-fog serigraph
- Tilt back front glass
- LED lighting
- Plexiglass sliding doors
- Stainless steel work bench
- Deli/Pastry with drawer (static refrigeration)
- Cases ship standard unfinished front and stainless steel skin sides

### OPTIONS

- Marble/Granite work counter
- RAL color finish/wood laminate
- Roll down curtain
- Remote/water cooled unit
- Matching front cabinetry counters with top glass
- Stainless steel step up deck shelf
- Cold storage option with static refrigeration and separate control
- Casters



CLASSIC SQUARE DELI/PASTRY					
TECHNICAL FEATURES		MODELS			
		CLASSIC SDP1000	CLASSIC SDP1500	CLASSIC SDP2000	CLASSIC SDP2500
External Dimensions (L-D-H)	Inches	*39 3/8" - 38 1/16" - 52 3/8"	*59 1/8" - 38 1/16" - 52 3/8"	*78 3/4" - 38 1/16" - 52 3/8"	*98 7/16" - 38 1/16" - 52 3/8"
	Inches-MM	*1000 - 967 - 1330	*1500 - 967 - 1330	*2000 - 967 - 1330	*2500 - 967 - 1330
Crated Dimensions (L-D-H)	Inches	44" - 44" - 58"	65" - 44" - 58"	84 3/4" - 44" - 58"	104" - 44" - 58"
	Inches-MM	1100 - 1100 - 1473	1600 - 1100 - 1473	2100 - 1100 - 1473	2641 - 1100 - 1473
Power Supply	(V)	120V	120V	120V	120V
BTU'S @ +14°F Evap	BTU'S	1600 BTU'S	2016 BTU'S	2560 BTU'S	3072 BTU'S
Temperature					
Amperage	(A)	5A	5.5A	8.5A	8.6A
Deck Operating Temperature*	°F	39°F	39°F	39°F	39°F
Net Weights	Kg/Lb	147Kgs / 323Lbs	186Kgs / 410Lbs	224Kgs / 492Lbs	271Kgs / 596Lbs
Crated Weights	Kg/Lb	157Kgs / 297Lbs	200Kgs / 440Lbs	239Kgs / 526Lbs	291Kgs / 640Lbs

\* DIMENSIONS ARE WITHOUT SIDE PANELS

NOTE: ANY AND ALL SHELVES ABOVE THE DECK WILL NOT BE REFRIGERATED ON THESE MODELS

CLASSIC SQUARE DELI/PASTRY					
TECHNICAL FEATURES		MODELS			
		CLASSIC SDP3000	CLASSIC SDPA90C	CLASSIC SDPA90SQ	
External Dimensions (L-D-H)	Inches	*118 1/8" - 38 1/16" - 52 3/8"	**80 3/4" - 38 1/16" - 52 3/8"	** 41 3/16 - 38 1/16" - 52 3/8"	
	Inches-MM	*3000 - 967 - 1330	**2051 - 967 - 1330	**1047 - 967 - 1330	
Crated Dimensions (L-D-H)	Inches	124" - 44" - 58"	86" - 44" - 58"	47" - 44 - 58"	
	Inches-MM	3149 - 1100 - 1473	2184 - 1100 - 1473	1193 - 1100 - 1473	
Power Supply	(V)	120V	120V	120V	
BTU'S @ +14°F Evap	BTU'S	3072 BTU'S	2400 BTU'S	2400 BTU'S	
Temperature					
Amperage	(A)	11A	5A	5A	
Deck Operating Temperature*	°F	39°F	39°F	39°F	
Net Weights	Kg/Lb	314Kgs / 722Lbs	186Kgs / 410Lbs	186Kgs / 410Lbs	
Crated Weights	Kg/Lb	334Kb / 734Lbs	200Kgs / 440Lbs	200Kgs / 440Lbs	

\* DIMENSIONS ARE WITHOUT SIDE PANELS

\*\* PLEASE SEE PLAN VIEW FOR ADDITIONAL DIMENSIONS

NOTE: ANY AND ALL SHELVES ABOVE THE DECK WILL NOT BE REFRIGERATED ON THESE MODELS

\* Manufacturer reserves the right to change specifications without notice. Not responsible for error and omissions.



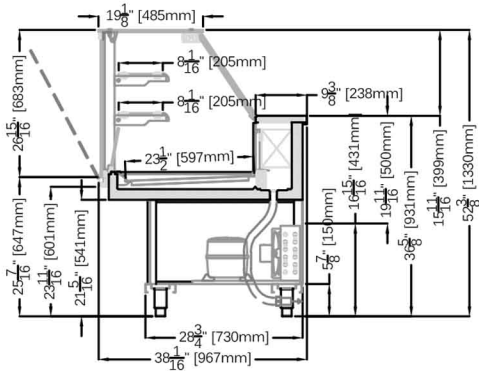
361-367 Beach Road, Burlingame, CA 94010  
 Tel: 855.885.2400 | 650.342.2400 | Fax: 650.342.7400  
 sales@oscartek.com | www.oscartek.com



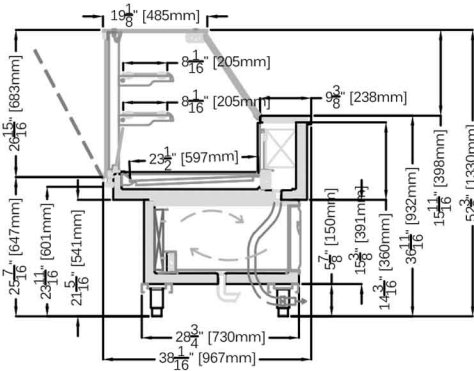
# CLASSIC SQUARE

## Deli/Pastry Showcase

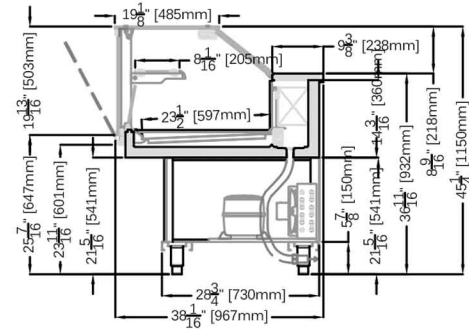
### STANDARD



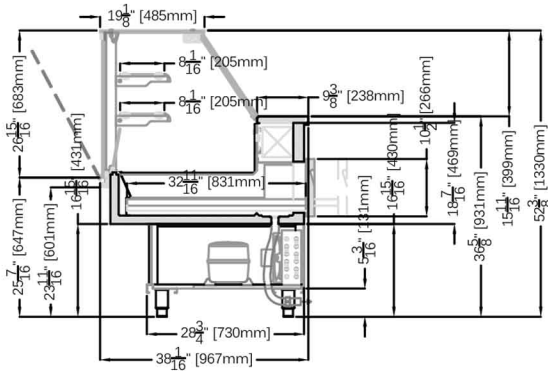
### OPTIONAL: COLD STORAGE



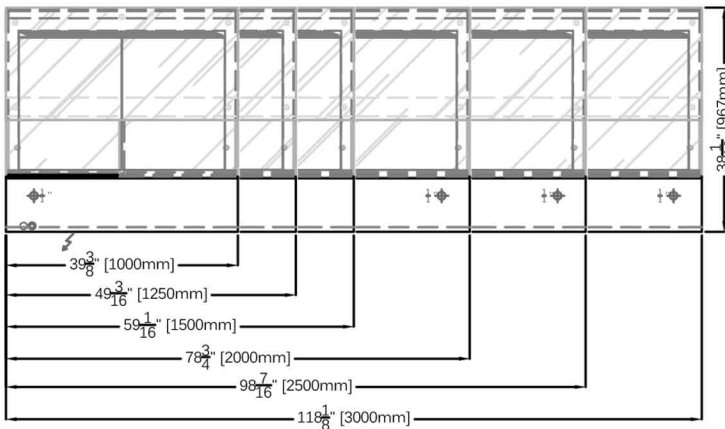
### OPTIONAL: 45 1/4\"/>



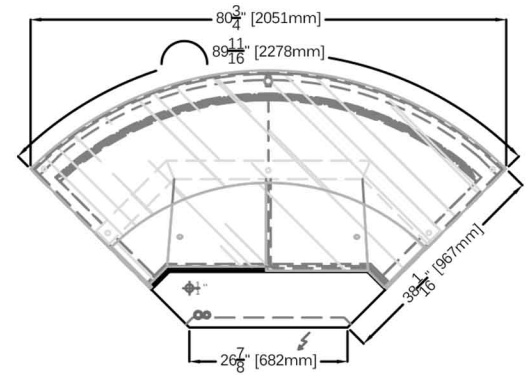
### OPTIONAL: WITH DRAWER AVAILABLE IN: 39\"/>



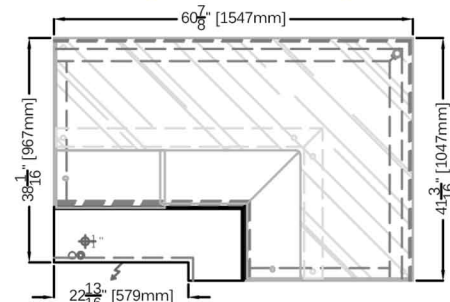
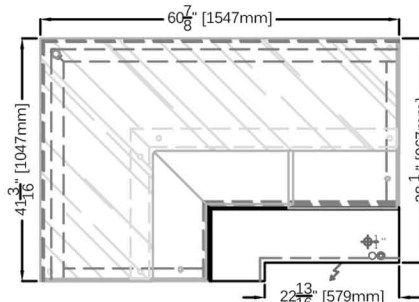
### PLAN VIEWS



### PLAN VIEW - A90 CURVE FOOTPRINT



### PLAN VIEWS - A90 SQUARE FOOTPRINT (LEFT & RIGHT)



ELECTRICAL LEGEND	
	REFRIGERATED LINES
	DRAIN
	POWER

\* Manufacturer reserves the right to change specifications without notice. Not responsible for error and omissions.



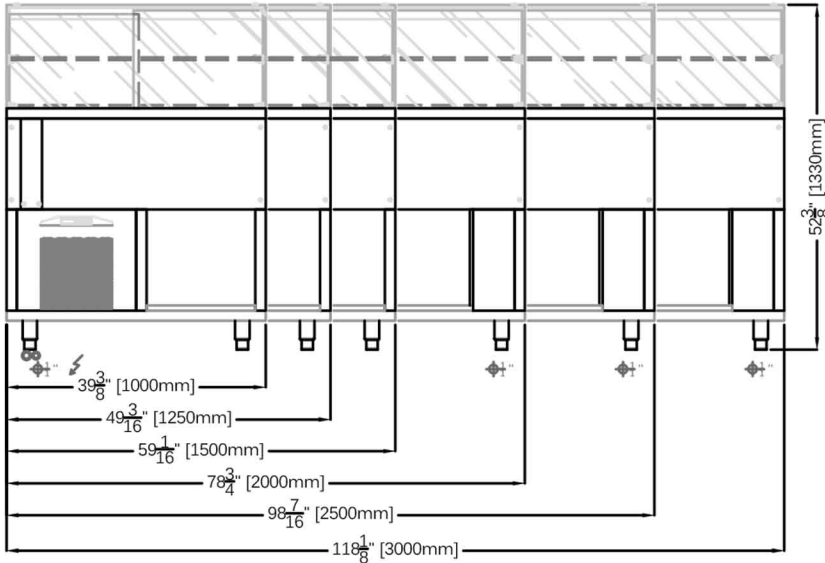
361-367 Beach Road, Burlingame, CA 94010  
 Tel: 855.885.2400 | 650.342.2400 | Fax: 650.342.7400  
 sales@oscartek.com | www.oscartek.com



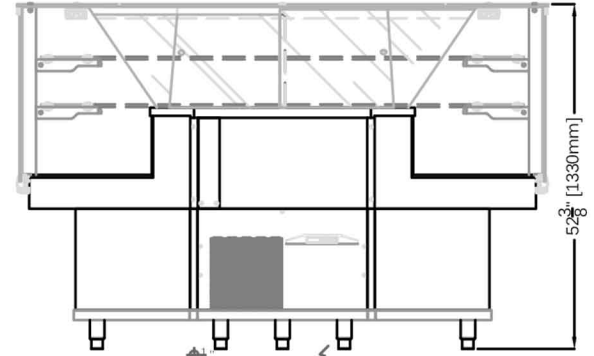
# CLASSIC SQUARE

## Deli/Pastry Showcase

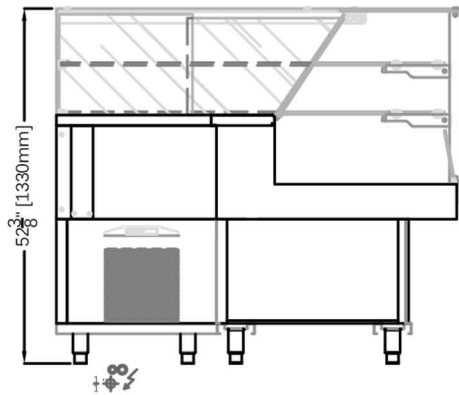
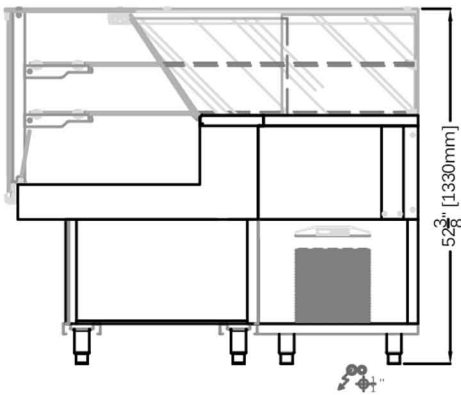
REAR ELEVATIONS (OPERATOR SIDE)



REAR ELEVATION (OPERATOR SIDE)  
A90 CURVE FOOTPRINT



REAR ELEVATIONS (OPERATOR SIDE)  
A90 SQUARE FOOTPRINT (LEFT & RIGHT)



### ELECTRICAL LEGEND

∞	REFRIGERATED LINES
⊕	DRAIN
⚡	POWER

\* Manufacturer reserves the right to change specifications without notice. Not responsible for error and omissions.



361-367 Beach Road, Burlingame, CA 94010  
 Tel: 855.885.2400 | 650.342.2400 | Fax: 650.342.7400  
 sales@oscartek.com | www.oscartek.com

