



Project Name: _____
Item #: _____ Quantity: _____



Photo shown cases side view with optional RAL color finish. Standard cases are unfinished front and stainless steel sides.



Visit our website for more finishing options and RAL colors
www.oscartek.com



Photo shown with drawer sliding out

GEM DELI/PASTRY

MODELS: GEM DP900, GEM DP1300, GEM DP1500, GEM DP1700, GEM DP2100, GEM DPA90SQ

STANDARD FEATURES

- Glass drawers
- Diffused LED light 3000°K
- Extra clear tempered glass
- Fully insulated stainless steel interior
- Galvanized chassis structure
- Case ship standard unfinished front with polished stainless steel sides

OPTIONS

- Lift up top glass
- Narrow depth – 27 ¼”D
- Cold storage
- Customized color display plate (back painted glass)
- Remote condensing unit
- RAL color/laminate front and side panels
- Unfinished panels to accept custom millwork by others
- Heated pan for evaporator
- Casters

*Oscartek reserves the right to change, modify, discontinue, or change any features, sizes, or capacity on any model without prior notice.

OSCARTEK®
512 South Airport Blvd., South San Francisco, CA 94080
Tel: 650.342.2400 | Fax: 650.342.7400
www.oscartek.com





Discover the Art of Display...

Project Name: _____

Item #: _____ Quantity: _____

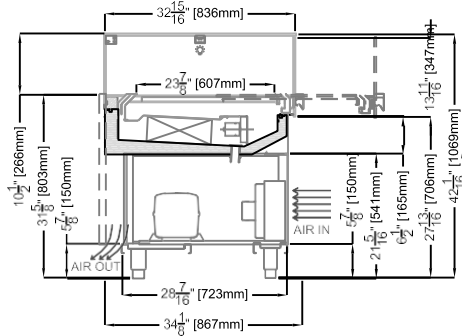
GEM DELI/PASTRY

MODELS: GEM DP900, GEM DP1300, GEM DP1500, GEM DP1700, GEM DP2100, GEM DPA90SQ

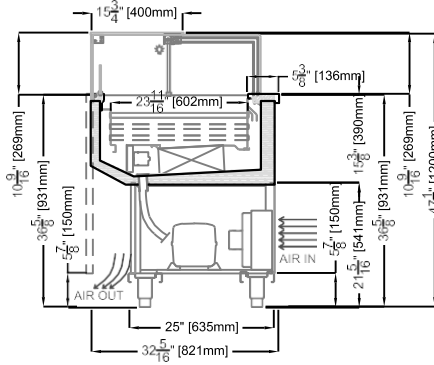
SECTION VIEWS

STANDARD

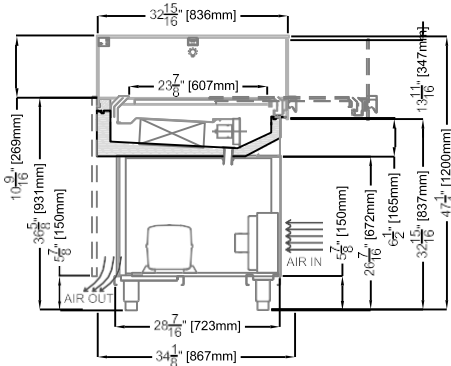
ALL MODELS EXCEPT FOR GEM DPA90SQ



GEM DPA90SQ

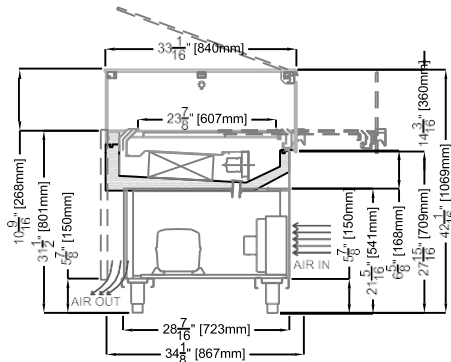


ALL MODELS TO MATCH WITH GEM DPA90SQ

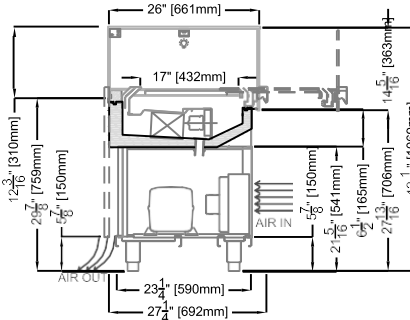


OPTIONAL

GEM – LIFT UP TOP GLASS



GEM NARROW – 27 1/4"D



*Oscartek reserves the right to change, modify, discontinue, or change any features, sizes, or capacity on any model without prior notice.

OSCARTEK®
512 South Airport Blvd., South San Francisco, CA 94080
Tel: 650.342.2400 | Fax: 650.342.7400
www.oscartek.com





Project Name: _____
 Item #: _____ Quantity: _____

GEM DELI/PASTRY

MODELS: GEM DP900, GEM DP1300, GEM DP1500, GEM DP1700, GEM DP2100, GEM DPA90SQ

GEM DELI/PASTRY				
TECHNICAL FEATURES		MODELS		
		GEM DP900 (GEMDPDRW35R4)	GEM DP1300 (GEMDPDRW51R4)	GEM DP1500 (GEMDPDRW59R4)
External Dimensions (L-D-H) Inches-MM	Inches MM	*35 9/16" - 34 1/8" - 42 1/16" *903 - 867 - 1069	*51 5/16" - 34 1/8" - 42 1/16" *1303 - 867 - 1069	*59 3/16" - 34 1/8" - 42 1/16" *1503 - 867 - 1069
Crated Dimensions (L-D-H) Inches-MM	Inches MM	43" - 41" - 58" 1092- 1041 - 1473	59" - 41" - 58" 1500 - 1041 - 1473	67" - 41" - 58" 1700 - 1041 - 1473
Refrigeration	Type	Ventilated	Ventilated	Ventilated
Refrigeration Display Area	Type	Deck	Deck	Deck
Operating Temperature	°F	39°F	39°F	39°F
Compressor	Nr./Type	1 / Hermetic	1 / Hermetic	1 / Hermetic
BTU'S @ +14°F Evap Temperature	BTU's	1900	2700	3100
Electric Supply	(V/Ph/Hz)	115/1/60	115/1/60	115/1/60
Power Consumption	(W/A)	690/6.4	800/7.5	1000/9.2
Defrost	Mode/Type	Air	Air	Air
Climatic Class	°F/H.R.	75°F-55%RH	75°F-55%RH	75°F-55%RH
Refrigerant	Type	R404A / R452A	R404A / R452A	R404A / R452A
Pipe Size (Inches)	Suction, Liquid	3/8" Suction, 1/4" Liquid	1/2" Suction, 1/4" Liquid	1/2" Suction, 1/4" Liquid
Net Weights	Lb	230	280	330
Crated Weights	Lb	445	495	545

***DIMENSIONS ARE WITH POLISHED S/S SIDES**

*Oscartek reserves the right to change, modify, discontinue, or change any features, sizes, or capacity on any model without prior notice.

OSCARTEK®
 512 South Airport Blvd., South San Francisco, CA 94080
 Tel: 650.342.2400 | Fax: 650.342.7400
 www.oscartek.com





Project Name: _____
 Item #: _____ Quantity: _____

GEM DELI/PASTRY

MODELS: GEM DP900, GEM DP1300, GEM DP1500, GEM DP1700, GEM DP2100, GEM DPA90SQ

GEM DELI/PASTRY				
TECHNICAL FEATURES		MODELS		
		GEM DP1700 (GEMDPDRW67R4)	GEM DP2100 (GEMDPDRW83R4)	GEM DPA90SQ (GEMDPR4AP9012)
External Dimensions (L-D-H) Inches-MM	Inches MM	*67 1/16" - 34 1/8" - 42 1/16" *1703 - 867 - 1069	*82 13/16" - 34 1/8" - 42 1/16" *2103 - 867 - 1069	*51 5/16" - 32 5/16" - 47 1/4" *1303 - 821 - 1200
Crated Dimensions (L-D-H) Inches-MM	Inches MM	73" - 41" - 58" 1854 - 1041 - 1473	88" - 41" - 58" 2235 - 1041 - 1473	58" - 58" - 58" 1397 - 1397 - 1397
Refrigeration	Type	Ventilated	Ventilated	Ventilated
Refrigeration Display Area	Type	Deck	Deck	Deck
Operating Temperature	°F	39°F	39°F	39°F
Compressor	Nr./Type	1 / Hermetic	1 / Hermetic	1 / Hermetic
BTU'S @ +14°F Evap Temperature	BTU's	3500	3800	3900
Electric Supply	(V/Ph/Hz)	115/1/60	115/1/60	115/1/60
Power Consumption	(W/A)	1100/10.4	1300/12.3	1150/10.9
Defrost	Mode/Type	Air	Air	Air
Climatic Class	°F/H.R.	75°F-55%RH	75°F-55%RH	75°F-55%RH
Refrigerant	Type	R404A / R452A	R404A / R452A	R404A / R452A
Pipe Size (Inches)	Suction, Liquid	5/8" Suction, 5/16" Liquid	5/8" Suction, 5/16" Liquid	1/2" Suction, 1/4" Liquid
Net Weights	Lb	340	380	410
Crated Weights	Lb	595	695	665

***DIMENSIONS ARE WITH POLISHED S/S SIDES**

*Oscartek reserves the right to change, modify, discontinue, or change any features, sizes, or capacity on any model without prior notice.

OSCARTEK®
 512 South Airport Blvd., South San Francisco, CA 94080
 Tel: 650.342.2400 | Fax: 650.342.7400
 www.oscartek.com

