



Discover the Art of Display...

Project Name: _____
Item #: _____ Quantity: _____

GEM NEUTRAL

MODELS: GEM N900, GEM N1300, GEM N1500, GEM N1700, GEM N2100, GEM NA90SQ

STANDARD FEATURES

- Glass drawers
- Diffused LED light 3000°K
- Extra clear tempered glass
- Fully insulated stainless steel interior
- Galvanized chassis structure
- Case ship standard unfinished front with polished stainless steel sides

OPTIONS

- Lift up top glass
- Narrow depth – 27 1/4”D
- Cold storage
- Customized color display plate (back painted glass)
- RAL color/laminate front and side panels
- Unfinished panels to accept custom millwork by others
- Casters



Photo shown with optional custom front finishes. Standard cases are unfinished front and stainless steel sides.



Visit our website for more finishing options and RAL colors
www.oscartek.com



Photo shown with drawer sliding out

*Oscartek reserves the right to change, modify, discontinue, or change any features, sizes, or capacity on any model without prior notice.

OSCARTEK®
512 South Airport Blvd., South San Francisco, CA 94080
Tel: 650.342.2400 | Fax: 650.342.7400
www.oscartek.com

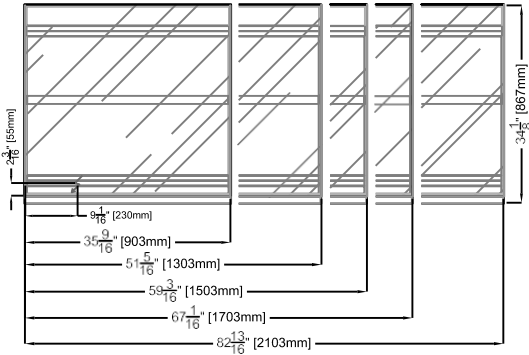


GEM NEUTRAL

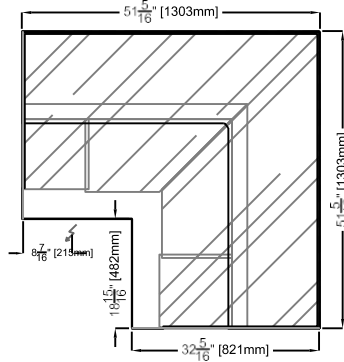
MODELS: GEM N900, GEM N1300, GEM N1500, GEM N1700, GEM N2100, GEM NA90SQ

PLAN VIEWS

GEM NEUTRAL LINEAR MODELS

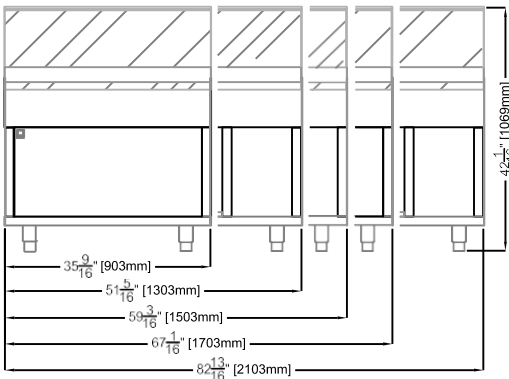


GEM NA90SQ

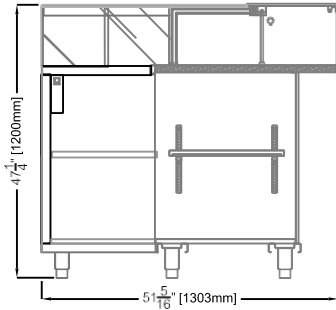


REAR ELEVATIONS (OPERATOR SIDE)

GEM NEUTRAL LINEAR MODELS



GEM NA90SQ



ELECTRICAL LEGEND

	POWER
---	-------

*Oscartek reserves the right to change, modify, discontinue, or change any features, sizes, or capacity on any model without prior notice.

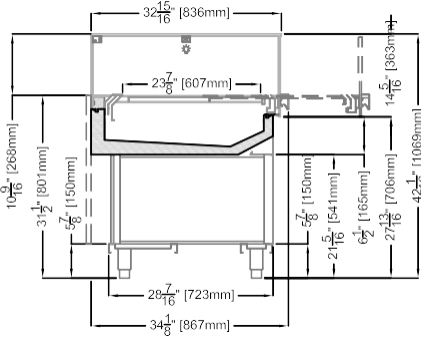
GEM NEUTRAL

MODELS: GEM N900, GEM N1300, GEM N1500, GEM N1700, GEM N2100, GEM NA90SQ

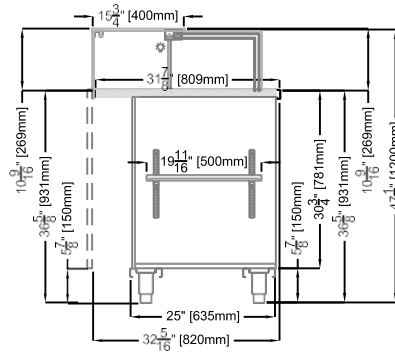
SECTION VIEWS

STANDARD

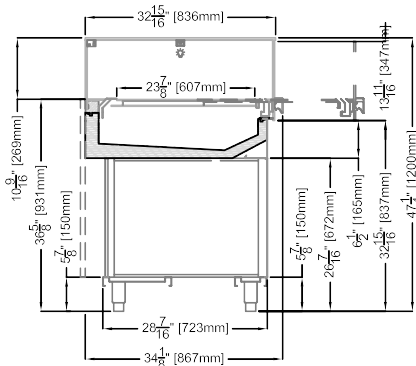
ALL MODES EXCEPT FOR GEM NA90SQ



GEM NA90SQ

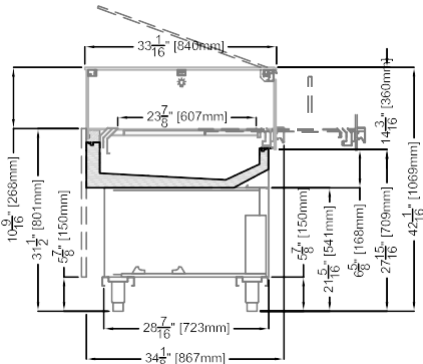


ALL MODELS TO MATCH GEM NA90SQ

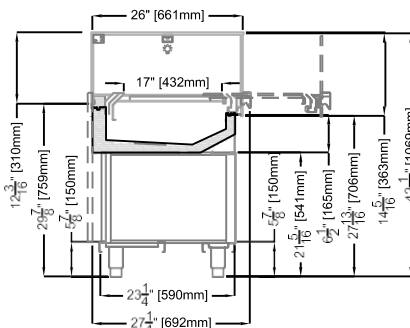


OPTIONAL

GEM – LIFT UP TOP GLASS



GEM NARROW – 27 1/4\"/>



*Oscartek reserves the right to change, modify, discontinue, or change any features, sizes, or capacity on any model without prior notice.



Project Name: _____
 Item #: _____ Quantity: _____

GEM NEUTRAL

MODELS: GEM N900, GEM N1300, GEM N1500, GEM N1700, GEM N2100, GEM NA90SQ

GEM NEUTRAL				
TECHNICAL FEATURES		MODELS		
		GEM N900 (GEMNDRW35R4)	GEM N1300 (GEMNDRW51R4)	GEM N1500 (GEMNDRW59R4)
External Dimensions (L-D-H) Inches-MM	Inches MM	*35 9/16" - 34 1/8" - 42 1/16" *903 - 867 - 1069	*51 5/16" - 34 1/8" - 42 1/16" *1303 - 867 - 1069	*59 3/16" - 34 1/8" - 42 1/16" *1503 - 867 - 1069
Crated Dimensions (L-D-H) Inches-MM	Inches MM	43" - 41" - 58" 1092- 1041 - 1473	59" - 41" - 58" 1500 - 1041 - 1473	67" - 41" - 58" 1700 - 1041 - 1473
Operating Temperature	°F	Ambient	Ambient	Ambient
Electric Supply	(V/Ph/Hz)	115/1/60	115/1/60	115/1/60
Power Consumption	(W/A)	30/0.3	50/0.5	50/0.5
Net Weights	Kg/Lb	190	210	260
Crated Weights	Kg/Lb	281	378	410
*DIMENSIONS ARE WITH POLISHED S/S SIDES				

GEM NEUTRAL				
TECHNICAL FEATURES		MODELS		
		GEM N1700 (GEMNDRW67R4)	GEM N2100 (GEMNDRW83R4)	GEM NA90SQ (GEMNR4AP9012)
External Dimensions (L-D-H) Inches-MM	Inches MM	*67 1/16" - 34 1/8" - 42 1/16" *1703 - 867 - 1069	*82 13/16" - 34 1/8" - 42 1/16" *2103 - 867 - 1069	*51 5/16" - 32 5/16" - 47 1/4" *1303 - 821 - 1200
Crated Dimensions (L-D-H) Inches-MM	Inches MM	73" - 41" - 58" 1854 - 1041 - 1473	88" - 41" - 58" 2235 - 1041 - 1473	58" - 58" - 58" 1397 - 1397 - 1397
Operating Temperature	°F	Ambient	Ambient	Ambient
Electric Supply	(V/Ph/Hz)	115/1/60	115/1/60	115/1/60
Power Consumption	(W/A)	60/0.6	60/0.6	50/0.5
Net Weights	Kg/Lb	290	330	210
Crated Weights	Kg/Lb	435	450	378
*DIMENSIONS ARE WITH POLISHED S/S SIDES				

*Oscartek reserves the right to change, modify, discontinue, or change any features, sizes, or capacity on any model without prior notice.

OSCARTEK®
 512 South Airport Blvd., South San Francisco, CA 94080
 Tel: 650.342.2400 | Fax: 650.342.7400
 www.oscartek.com

