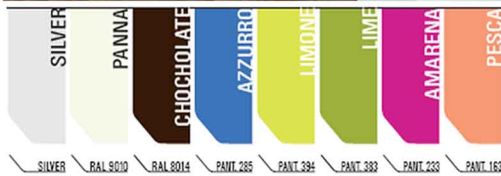


STANDARD FEATURES

- Double pane side glass ends
- Dixell digital control
- Diffused LED lighting 3000°K on each shelf and canopy
- Straight or inclined shelves
- Bottom evaporator ventilation cooling
- Stainless steel foam in place bottom and top
- Adjustable feet
- Cases ship standard unfinished

OPTIONS

- Stainless steel side panels in lieu of glass
- Shelf fence for inclined position
- Black interior
- Remote/water cooled condensing unit
- RAL color/laminate front and side panels
- Condensate pan
- Casters



LA CROSSE COMBI				
TECHNICAL FEATURES		MODELS		
		LA CROSSE COMBI 1150	LA CROSSE COMBI 1650	LA CROSSE COMBI 2150
External Dimensions (L-D-H)	Inches	*46 7/8" - 45 3/8" - 52 9/16"	*66 9/16" - 45 3/8" - 52 9/16"	*86 1/4" - 45 3/8" - 52 9/16"
	Inches-MM	*1190 - 1152 - 1335	*1690 - 1152 - 1335	*2190 - 1152 - 1335
Crated Dimensions (L-D-H)	Inches	53 7/8" - 53 7/8" - 58"	73 5/8" - 53 7/8" - 58"	93 1/4" - 53 7/8" - 58"
	Inches-MM	1370 - 1370 - 1473	1870 - 1370 - 1473	2368 - 1370 - 1473
BTU's @ +14°F Evap				
Temperature	BTU'S	4600 BTU'S	5320 BTU'S	6650 BTU'S
Power Supply	(V/Ph/Hz)	208-220/1/60	208-220/1/60	208-220/1/60
Amperage	(A)	4A	6A	7A
Operating Temperature	°F	40°F	40°F	40°F
Net Weights	Kg/Lb	130Kgs / 286Lbs	200Kgs / 440Lbs	240Kgs / 528Lbs
Crated Weights	Kg/Lb	145Kgs / 319Lbs	220Kgs / 484Lbs	255Kgs / 561Lbs

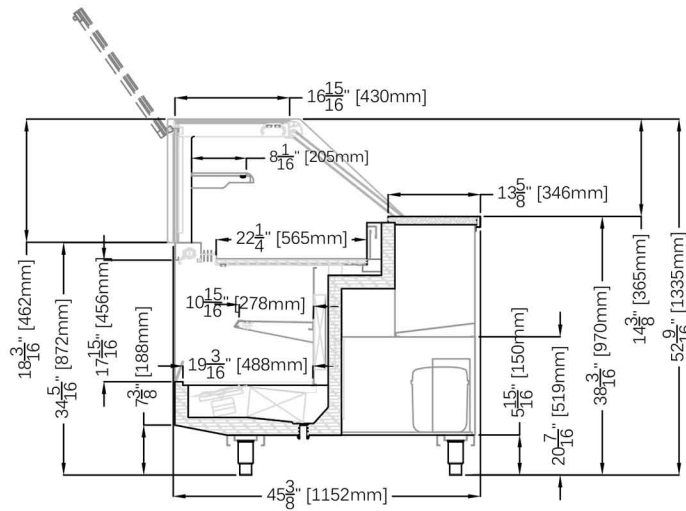
* DIMENSIONS ARE WITHOUT SIDE PANELS

* Manufacturer reserves the right to change specifications without notice. Not responsible for error and omissions.

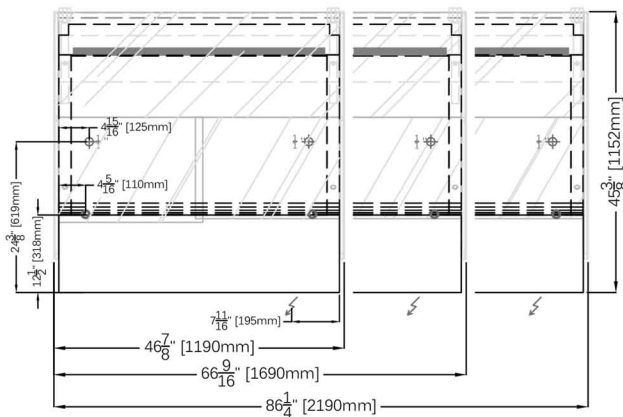


361-367 Beach Road, Burlingame, CA 94010
 Tel: 855.885.2400 | 650.342.2400 | Fax: 650.342.7400
 sales@oscartek.com | www.oscartek.com





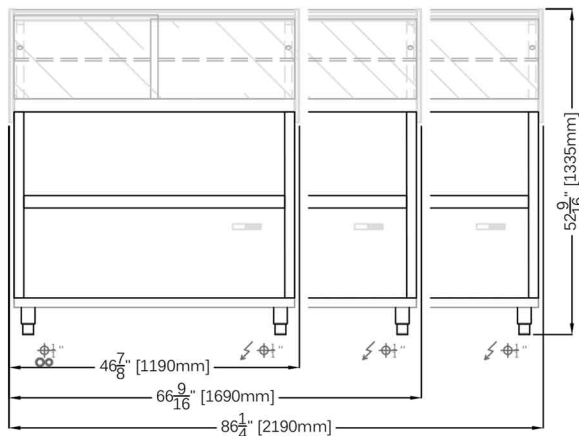
PLAN VIEWS: LA CROSSE COMBI 1150, LA CROSSE COMBI 1650, LA CROSSE COMBI 2150



ELECTRICAL LEGEND	
	REFRIGERATED LINES
	DRAIN
	POWER

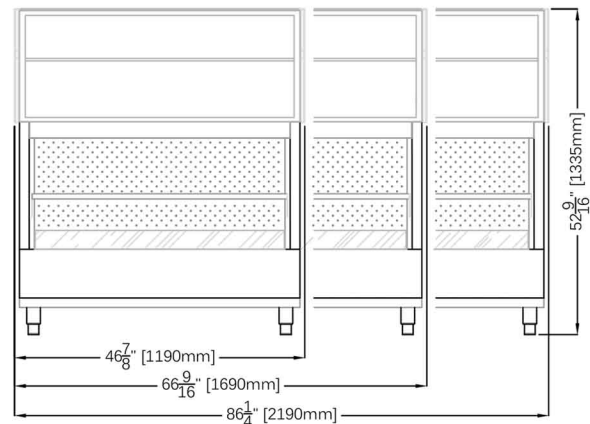
REAR ELEVATIONS (OPERATOR SIDE):

LA CROSSE COMBI 1150, LA CROSSE COMBI 1650, LA CROSSE 2150



FRONT ELEVATIONS (CUSTOMER SIDE):

LA CROSSE COMBI 1150, LA CROSSE COMBI 1650, LA CROSSE COMBI 2150



* Manufacturer reserves the right to change specifications without notice. Not responsible for error and omissions.



361-367 Beach Road, Burlingame, CA 94010
 Tel: 855.885.2400 | 650.342.2400 | Fax: 650.342.7400
 sales@oscartek.com | www.oscartek.com

